



San Nan Technology Co.,Ltd Shenzhen . China

FOCUS ON LED ADVERTISING LIGHT BOX SOURCE RESEARCH AND DEVELOPMENT AND PRODUCTION

CONTENTS

- 1 **COMPANT PROFILE**
- 2 **PRODUCT INTRODUCTIONP**
- 3 **PROJECT CASE**

01、 COMPANY INTRODUCTION

- COMPANY PROFILE
- DEVELOPMENT HISTORY
- CORPORATE PHILOSOPHY
- ENTERPRISE QUALIFICATION

COMPANY PROFILE

Shenzhen SanNan technology co., Ltd. is a high-tech enterprise committed to the research and development, production, sales and service innovation of LED light box lighting, LED indoor and outdoor decorative lighting, LED intelligent control and other products.

Company has always been in accordance with international standards of production and management philosophy, strict product quality and the production management, the company products are mainly used, NICHIA, cory CREE, OSRAM OSRAM, Taiwan GENESIS in the new century the international first-class manufacturers such as LED lights, with the domestic first-class manufacturer three Ann, wafer chip custom LED lamp bead, all products have passed CE safety certification, the European Union RoHS environmental certification, the United States FCC emc certification.

Company main product is the dynamic light box series, the series of diffuse backlight, side light series, the series of module, Control system series, mainly used in airport, subway, high-speed rail, bus station, shopping center of jewelry, cars, mobile phones, food, cosmetics, clothing, education, finance, oil and other industries of indoor and outdoor advertising decorative lighting.

Holding the goal of sincere cooperation and common development, the company strives to achieve the goal of "quality first, reputation first, service first", and create a beautiful blue sky with green energy!



DEVELOPMENT HISTORY

In 2015

The company has an area of 400 square meters and 20 employees

In 2018

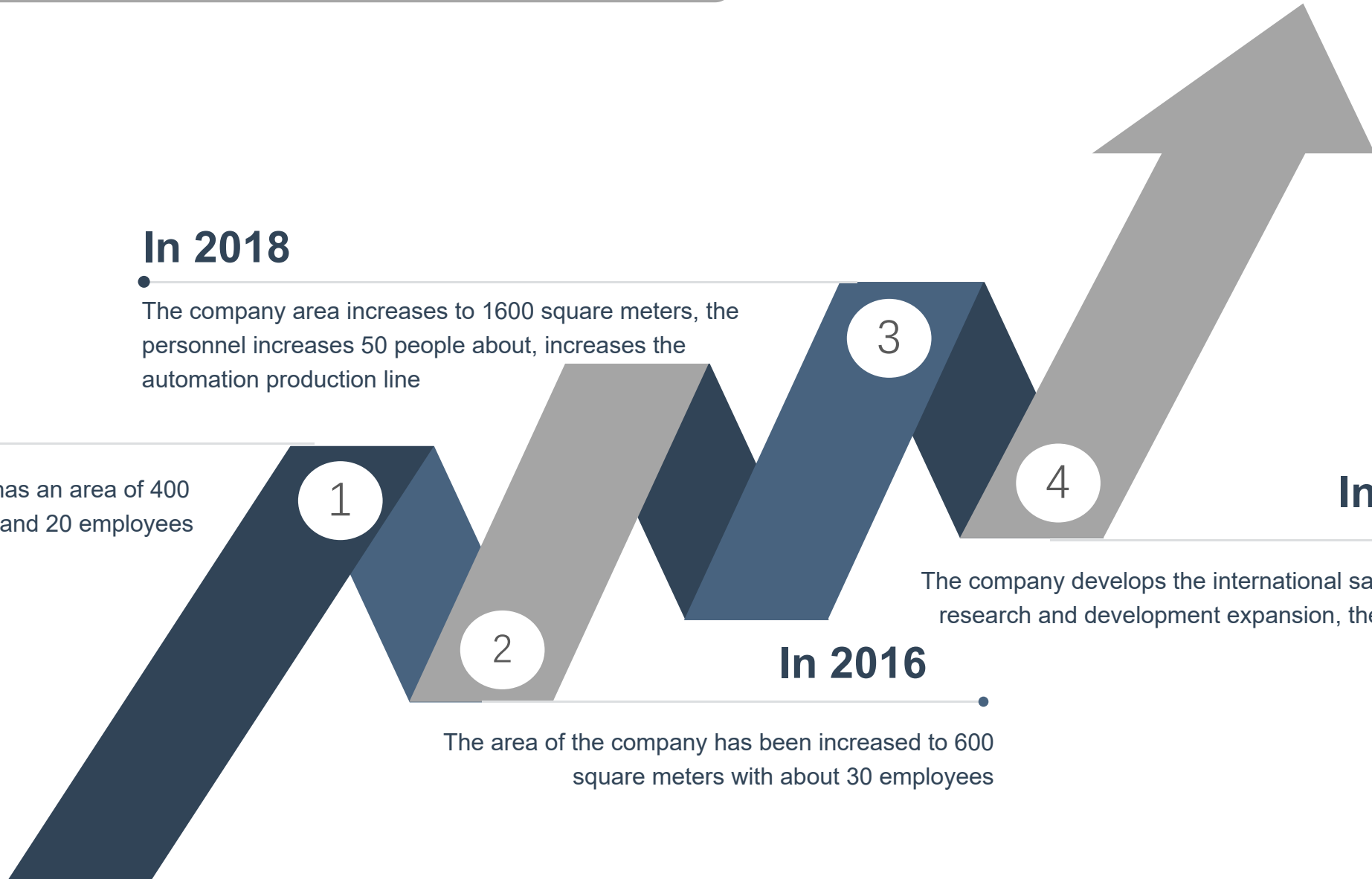
The company area increases to 1600 square meters, the personnel increases 50 people about, increases the automation production line

The area of the company has been increased to 600 square meters with about 30 employees

In 2016

The company develops the international sales platform, increases the research and development expansion, the staff is about 50 people

In 2019



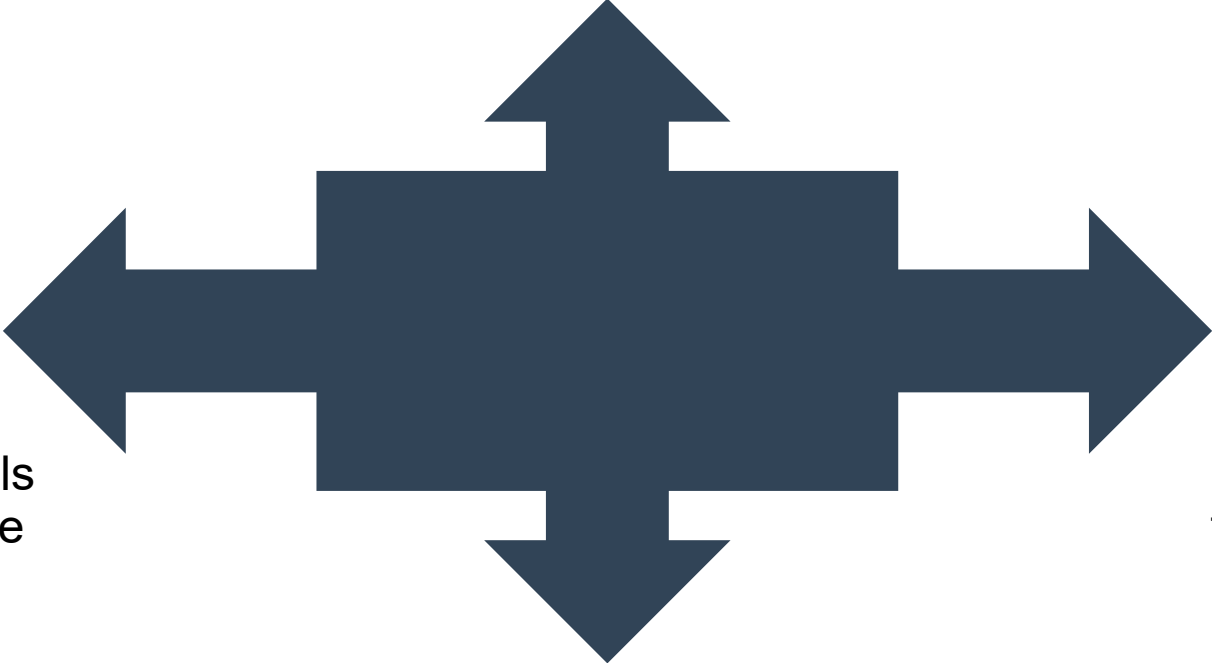
CORPORATE PHILOSOPHY

TEAMWORK

Individual power is limited, team power is unlimited

QUALITY

Attitude is everything, details determine success or failure



INNOVATION

Self-improvement and innovation, the pursuit of excellence, keep pace with The Times, beyond self

INTEGRITY

Efficiency makes the brand, integrity makes the future

ENTERPRISE QUALIFICATION

Certificate of Conformity

HTT19060727E

SHEN ZHEN SAN NAN TECHNOLOGY Co., Ltd.

2F, eleventh JIANGHAI industrial park, No.7, ahiyan town, Baoan district, Shenzhen City

ROB dynamic panel

三南科技

Test standards	Report Number	Issued By	Issued Date
EN 60947-3:2009	HTT19060727E	HTT	Jun.12,2018

Authorized Signer: Kevin Yang

Date: Jun.12,2018

Certificate of Conformity

HTT19060727R

SHEN ZHEN SAN NAN TECHNOLOGY Co., Ltd.

2F, eleventh JIANGHAI industrial park, No.7, ahiyan town, Baoan district, Shenzhen City

ROB dynamic panel

三南科技

This is to certify that, on the basis of the tests undertaken as per Report No. HTT19060727R, the submitted sample of the above item complies with the EMC Directive 2014/53/EU. It is possible to use CE marking to demonstrate the compliance with the EMC.

Test standards	Report Number	Issued By	Issued Date
IEC 62321-4:2015	IEC 62321-4:2015	HTT	Jun.05,2018

Authorized Signer: Kevin Yang

Date of Issue: Jun.05,2018

Certificate of Compliance

HTT19060727E

SHEN ZHEN SAN NAN TECHNOLOGY Co., Ltd.

Shenzhen Baoan District Shiyang Yonghe Road 7th, Jianghai Industrial Park a building 2F.

Shenzhen Baoan District Shiyang Yonghe Road 7th, Jianghai Industrial Park a building 2F.

One meter 12 lamp 3030 high pressure diffuse light bar

三南科技

Test standards	Report Number	Issued By	Issued Date
EN 60947-3:2009	HTT19060727E	HTT	Jun.05,2018

Authorized Signer: Kevin Yang

Date: Jun.05,2018

Certificate of Compliance

HTT19060727R

SHEN ZHEN SAN NAN TECHNOLOGY Co., Ltd.

Shenzhen Baoan District Shiyang Yonghe Road 7th, Jianghai Industrial Park a building 2F.

Shenzhen Baoan District Shiyang Yonghe Road 7th, Jianghai Industrial Park a building 2F.

One meter 12 lamp 3030 high pressure diffuse light bar

三南科技

This is to certify that, on the basis of the tests undertaken as per Report No. HTT19060727R, the submitted sample of the above item complies with the EMC Directive 2014/53/EU. It is possible to use CE marking to demonstrate the compliance with the EMC.

Test standards	Report Number	Issued By	Issued Date
EN 60947-3:2009	HTT19060727R	HTT	Jun.05,2018

Authorized Signer: Kevin Yang

Date of Issue: Jun.05,2018

FCC-VERIFICATION

HTT19060727E

SHEN ZHEN SAN NAN TECHNOLOGY Co., Ltd.

Shenzhen Baoan District Shiyang Yonghe Road 7th, Jianghai Industrial Park a building 2F.

Shenzhen Baoan District Shiyang Yonghe Road 7th, Jianghai Industrial Park a building 2F.

One meter 12 lamp 3030 high pressure diffuse light bar

三南科技

This is to certify that, on the basis of the tests undertaken as per Report No. HTT19060727E, the submitted sample of the above item complies with the FCC Part 15 Subpart B Class B Measurement Procedure ANSI C43.20.3. It is only valid in connection with the test report number: HTT19060727E.

TEST LABORATORY

Authorized Signer: Kevin Yang

Date: Jun.05,2018

Certificate of Compliance

HTT19060727E

SHEN ZHEN SAN NAN TECHNOLOGY Co., Ltd.

Shenzhen Baoan District Shiyang Yonghe Road 7th, Jianghai Industrial Park a building 2F.

Shenzhen Baoan District Shiyang Yonghe Road 7th, Jianghai Industrial Park a building 2F.

One meter 12 lamp 3030 high pressure diffuse light bar

三南科技

This is to certify that, on the basis of the tests undertaken as per Report No. HTT19060727E, the submitted sample of the above item complies with the EMC Directive 2014/53/EU. It is possible to use CE marking to demonstrate the compliance with the EMC.

Test standards	Report Number	Issued By	Issued Date
EN 60947-3:2009	HTT19060727E	HTT	Jun.05,2018

Authorized Signer: Kevin Yang

Date: Jun.05,2018

Certificate of Compliance

HTT19060727E

SHEN ZHEN SAN NAN TECHNOLOGY Co., Ltd.

2F, eleventh JIANGHAI industrial park, No.7, ahiyan town, Baoan district, Shenzhen City

ROB dynamic panel

三南科技

Test standards	Report Number	Issued By	Issued Date
EN 60947-3:2009	HTT19060727E	HTT	Aug.12,2018

Authorized Signer: Kevin Yang

Date: Aug.12,2018

FCC-VERIFICATION

HTT19060727R

SHEN ZHEN SAN NAN TECHNOLOGY Co., Ltd.

2F, eleventh JIANGHAI industrial park, No.7, ahiyan town, Baoan district, Shenzhen City

ROB dynamic panel

三南科技

This is to certify that, on the basis of the tests undertaken as per Report No. HTT19060727R, the submitted sample of the above item complies with the FCC Part 15 Subpart B Class B Measurement Procedure ANSI C43.20.3. It is only valid in connection with the test report number: HTT19060727R.

TEST LABORATORY

Authorized Signer: Kevin Yang

Date: Aug.12,2018

Certificate of Compliance

HTT19060727E

SHEN ZHEN SAN NAN TECHNOLOGY Co., Ltd.

Shenzhen Baoan District Shiyang Yonghe Road 7th, Jianghai Industrial Park a building 2F.

Shenzhen Baoan District Shiyang Yonghe Road 7th, Jianghai Industrial Park a building 2F.

One meter 12 lamp 3030 high pressure diffuse light bar

三南科技

Test standards	Report Number	Issued By	Issued Date
EN 60947-3:2009	HTT19060727E	HTT	Aug.12,2018

Authorized Signer: Kevin Yang

Date of Issue: Aug.12,2018

FCC-Verification of Conformity

SZCCT19102008-FCC-01

SHEN ZHEN SAN NAN TECHNOLOGY Co., Ltd.

44th, Liu Park, Shiyang Town, Baoan district, Shenzhen, China

Shenzhen Baoan District Shiyang Yonghe Road 7th, Jianghai Industrial Park a building 2F.

Shenzhen Baoan District Shiyang Yonghe Road 7th, Jianghai Industrial Park a building 2F.

One meter 12 lamp 3030 high pressure diffuse light bar

三南科技

Requirement	Applied Standards	Document Evidence	Result
FCC Standards	FCC Part15B:2012	Test Report: SZCCT19102008-FCC-01	Conform

Authorized Signer: Kevin Yang

Date: Dec.04, 2018

Certification of Conformity

SZCCT19102008-RoHS-01

SHEN ZHEN SAN NAN TECHNOLOGY Co., Ltd.

44th, Liu Park, Shiyang Town, Baoan district, Shenzhen, China

Shenzhen Baoan District Shiyang Yonghe Road 7th, Jianghai Industrial Park a building 2F.

Shenzhen Baoan District Shiyang Yonghe Road 7th, Jianghai Industrial Park a building 2F.

One meter 12 lamp 3030 high pressure diffuse light bar

三南科技

Requirement	Applied Standards	Document Evidence	Result
RoHS Directive	2011/65/EU	Test Report: SZCCT19102008-RoHS-01	Conform

Authorized Signer: Kevin Yang

Date: Dec.04, 2018

EC-Certification of Conformity

SZCCT19102008-RoHS-01

SHEN ZHEN SAN NAN TECHNOLOGY Co., Ltd.

44th, Liu Park, Shiyang Town, Baoan district, Shenzhen, China

Shenzhen Baoan District Shiyang Yonghe Road 7th, Jianghai Industrial Park a building 2F.

Shenzhen Baoan District Shiyang Yonghe Road 7th, Jianghai Industrial Park a building 2F.

One meter 12 lamp 3030 high pressure diffuse light bar

三南科技

Requirement	Applied Standards	Document Evidence	Result
EMC Directives	2014/53/EU Electromagnetic Compatibility EN 55015:2012	Test Report: SZCCT19102008-EMC-01	Conform

Authorized Signer: Kevin Yang

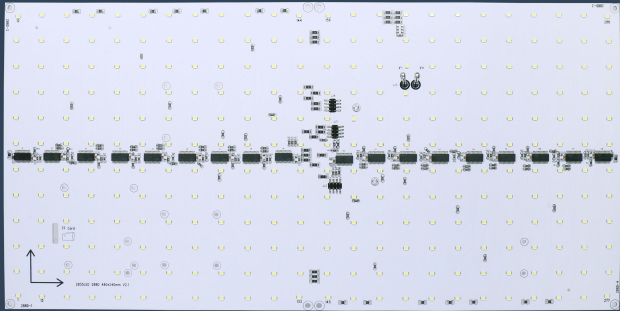
Date: Dec.04, 2018

02、 PRODUCT PRESENTATION

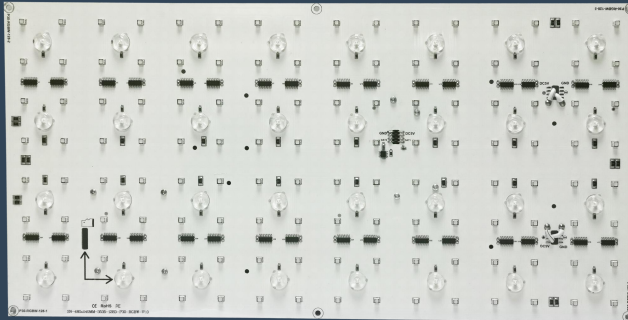
- **INTRODUCTION TO PRODUCTS**
- **SERVICE ASSURANCE**

MAIN PRODUCT

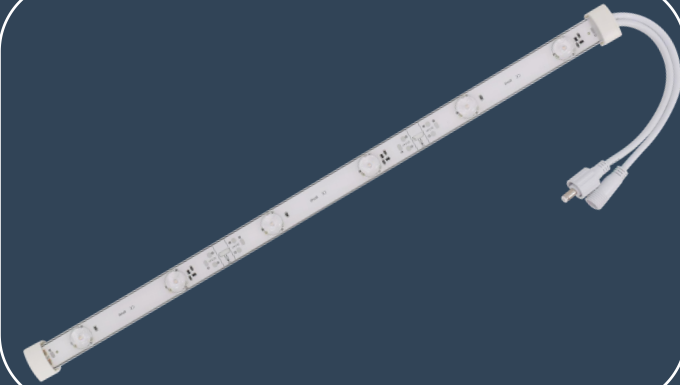
The main products of the company are dynamic light box series, diffuse backlight series, side light series, module series, control system series



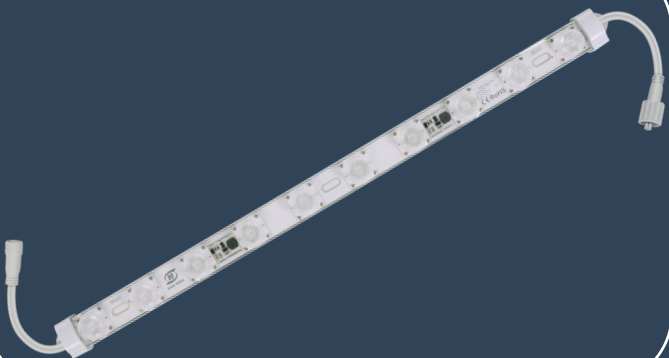
LED Dynamic light box series



LED full color dynamic light box series



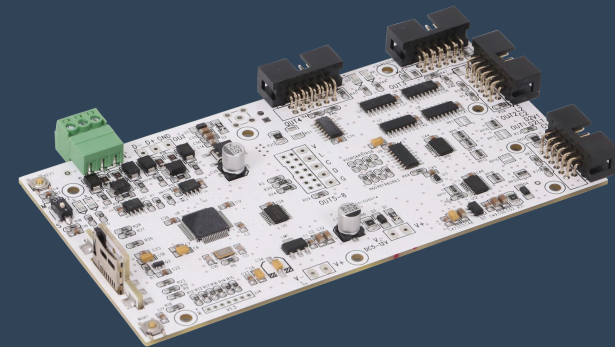
LED Backlight bar series



LED Edge light bar series



LED Module series



Control system series

MOVE FEELING SERIE- P20-A



Product features

1. DC12V low-voltage power supply, safe and reliable, constant current IC drive, good brightness consistency.
2. 1.6mm thick and high thermal conductivity aluminum substrate is used for heat dissipation to improve the service life of the product.
3. 9V SMD2835, high brightness, low light decay, good color quality, long life.
4. The lamp bead spacing is 2CM, and the operation animation is meticulous and considerable, which can be used for > 6CM thick lamp box.
5. Each lamp bead works independently. If one lamp bead is damaged, it will not affect the operation of other lamp beads.



Product type	Color temperature	Operating voltage	LED light source	Power	luminous flux	Length	Breadth	LED quantity
SN-P20-A-W-288	7000-8000K	DC12V	SMD2835	40	20	480	240	288pcs
SN-P20-A-W-216	7000-8000K	DC12V	SMD2835	30	20	360	240	216pcs
SN-P20-A-W-108	7000-8000K	DC12V	SMD2835	15	20	360	120	108pcs
SN-P20-A-W-72	7000-8000K	DC12V	SMD2835	10	20	240	120	72pcs

MOVE FEELING SERIE-P30-C



Product features

1. DC12V low-voltage power supply, safe and reliable, constant current IC drive, good brightness consistency.
2. 1.2mm thick and high thermal conductivity aluminum substrate is used for heat dissipation to improve the service life of the product.
3. 9V SMD2835, high brightness, low light decay, good color quality, long life.
4. The lamp bead spacing is 3CM, and the operation animation is meticulous and considerable, which can be used for > 8CM thick lamp box.
5. It is required that the size of the light box is relatively large with high cost performance.



Product type	Color temperature	Operating voltage	LED light source	Power	luminous flux	Length	Breadth	LED quantity
SN-P30-C-W-288	7000-8000K	DC12V	SMD2835	62	20	720	360	288pcs
SN-P30-C-W-216	7000-8000K	DC12V	SMD2835	42	20	480	240	216pcs
SN-P30-C-W-144	7000-8000K	DC12V	SMD2835	31	20	360	360	144pcs
SN-P30-C-W-96	7000-8000K	DC12V	SMD2835	21	20	360	240	96pcs
SN-P30-C-W-72	7000-8000K	DC12V	SMD2835	16	20	360	180	72pcs

MOVE FEELING SERIE-P7.5-E



Product features

1. DC5V low-voltage power supply, safe and reliable, constant current IC drive, good brightness consistency.
2. Adopt 1.6mm thick double-sided fiberglass board FR4 international material for heat dissipation, better heat dissipation performance.
3. 3V SMD2835, high brightness, low light decay, good color quality, long life.
4. The spacing of lamp beads is 7.5mm, and the operation animation is meticulous and considerable, which can be used for > 2.5cm thick lamp box.



Product type	Color temperature	Operating voltage	LED light source	Power	luminous flux	Size	Color rendering index	LED quantity
SN-P7.5-E-W	6000K	DC5V	SMD2835	24	0.5	420*300	≥70	2240pcs



FULL COLOR DYNAMIC SERIES-P30-H2-RGB+W



Product features

1. Dc5v-dc24v low-voltage power supply, safe and reliable, constant current IC drive, good brightness consistency.
2. Adopt 1.2mm thick aluminum substrate with high thermal conductivity for heat dissipation to improve the service life of the product.
3. The built-in driver IC SMD3535 lamp bead is adopted, the color of light is highly consistent, and all-true color display can be realized.
4. SMD2835 white light lamp bead is used as lighting supplement, the lamp bead has the characteristics of high brightness, low light attenuation, good color consistency, long life and so on.
5. The 170° large Angle optical lens is used to scatter the white light beads, so that the light plate emits light evenly without yellow spots, so that the LED lighting is not dazzling.
6. The distance between the light beads is 30MM, the running animation is meticulous and considerable, and it can be used for > 8CM thick light box and interior decoration lighting.



Product type	Color temperature	Operating voltage	LED light source	Power	luminous flux	Size	Color rendering index	W Bead spacing (mm)	LED quantity
SN-P30-H2-RGB+W	RGB 7000-8000K	DC5-24V	SMD3535+28 35	40	23/W60	480*24 0	≥70	60	128+32pc s

SERVICE GUARANTEE



Quality assurance for two years

All products sold can enjoy a two-year warranty period, the start date is subject to the date the buyer receives the goods, the buyer within the warranty period, if there are quality problems can be sent back to the manufacturer for free maintenance, send back to the manufacturer back and forth logistics needs to be borne by the buyer



After-sales installation guide

After receiving it, install it according to the instructions. If you have any questions, please contact our after-sales personnel for guidance



About the return of the goods

Please feel free to contact us if you have any questions after receiving the product

03、 ENGINEERING PROJECTS

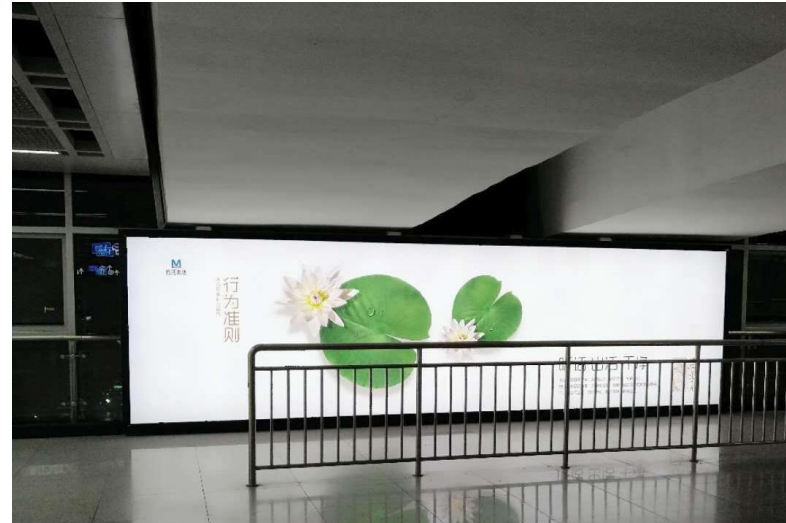
- SUBWAY,AIRPORT,RAILWAY, STATION CASES
- MALL CASE
- DYNAMIC LIGHT BOX
- CASE OF MOBILE PHONESTORE



AIRPORT, RAILWAY STATION CASES



SUBWAY CASES



MALL CASE-1



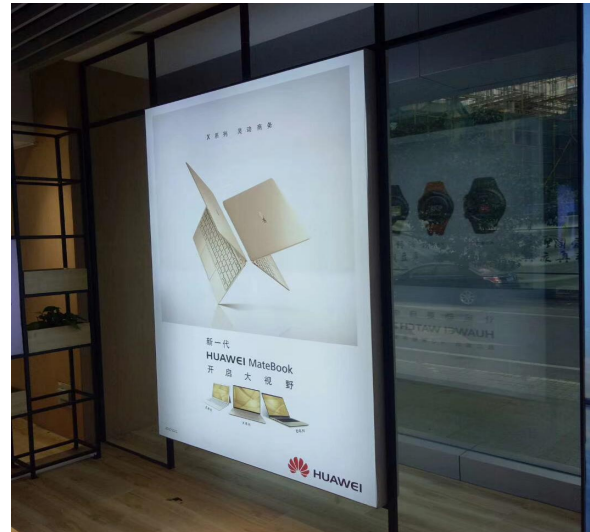
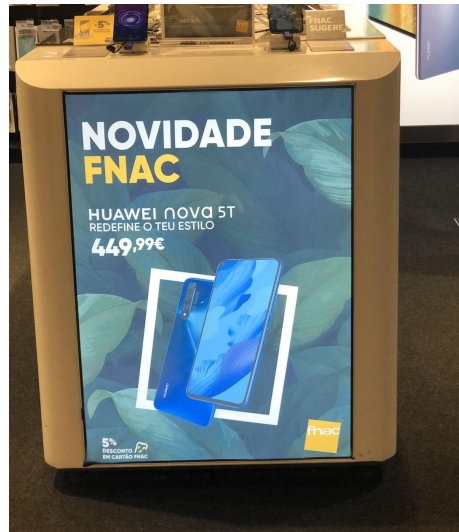
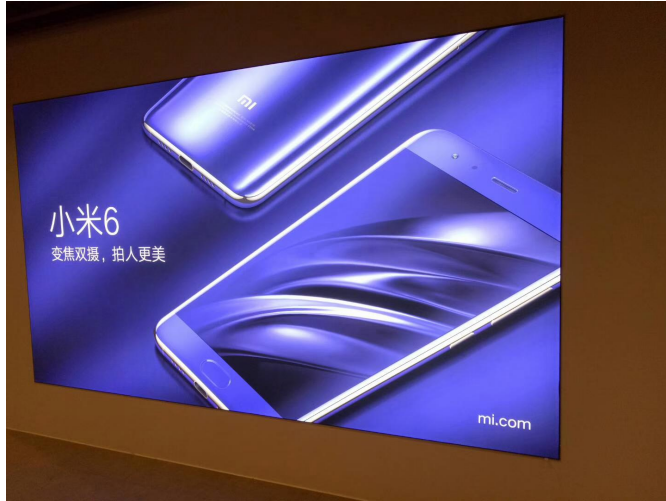
MALL CASE-2



DYNAMIC LIGHT BOX



CASE OF MOBILE PHONE STORE





San Nan Technology Co.,Ltd Shenzhen . China

Address: www.szslnled.com

TEL: 0755-33122805,086-18576729248

Address: Shenzhen Baoan District Shiyan Yonghe Road 7th,
Janghai Industrial Park a building 2 floor